



L120

Printer control panel instructions

Beijing Dazzle 3D Technology Co.,Ltd

September,2018

Disclaimer

All product, product specifications and data are subject to change without notice for improved reliability, functionality, design or other reasons.

Any of the errors, inaccuracies or incompleteness of any product related data sheets or other published materials, Beijing Dazzle 3D Technology Co., Ltd. and its affiliates, agents and employees, and all individuals representing the company (collectively referred to as "Dazzle"), does not assume any and full responsibility.

Dazzle does not warrant, represent or guarantee the suitability of the product for its specific use or the continuous production of any product. To the fullest extent permitted by applicable law, Dazzle does not assume (i) any and all liability arising out of the application or use of any product, and (ii) includes but is not limited to any and all liability arising out of the particular, joint or incidental damages, and (iii) No implied warranties of any kind, including implied warranties of fitness for a particular purpose, non-infringement and merchantability.

The statement about the application of the product to a certain type of application is subject to the typical requirements of the general application environment of Dazzle. There is no association between such claims and the applicability claims for product-specific applications. It is the customer's responsibility to certify that a particular product is suitable for a particular application based on the product's technical specifications. The parameters provided in the data sheet and / or technical specifications may vary from application to application and performance may vary over time. All operating parameters, including typical parameters, must be confirmed by the customer's technical experts based on each application environment. Product specifications are not extended or otherwise modified by Dazzle Manufacturing's terms and conditions of purchase, including but not limited to the stated warranty conditions.

Unless stated in writing, Dazzle products are not intended for use in medical, ambulance or life support, or other applications where failure of a major product may result in personal injury or death. Customer use or sale of products that are not expressly indicated for use in the above applications are at your own risk. To obtain written terms and conditions for the products specified for the above applications, please contact the authorized personnel of the company.

Nothing in this document or any cause of Dazzle grants any intellectual property rights, express or implied, by estoppel or otherwise. Product names and logos mentioned herein may be trademarks of their respective owners.

CONTENT

1

Introduction 01

2

Interface 01

2.1 Print Status **01**

2.2 Model List **02**

2.3 Resin List **02**

2.4 History **03**

2.5 System Setting **03**

2.5.1 Language Setting **03**

2.5.2 Network Setting **03**

2.5.3 Time Calibration **04**

2.5.4 System Information **04**

2.6 Adjust **05**

2.6.1 Motor Adjust **05**

2.6.2 Light Source Adjust **05**

2.6.3 Scraper Adjust **05**

2.7 Cleaning **05**

Introduction

1 Introduction

This document describes the instructions for using the L120 or L120 Pro printer software. The main functions of the device control panel include: print status, model list, resin list, history, system setting, debugging, cleaning, and so on. The following is a detailed description of the control panel.

Interface

2 Interface

After the software starts, the main interface shows. The interface mainly includes the running status of the device, a series of application buttons and the Home button. Figure 1-1 shows the interface:

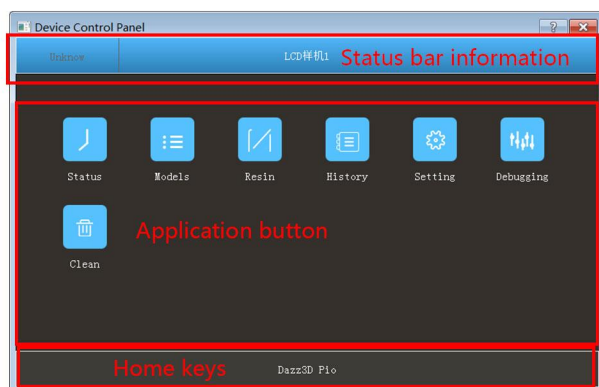


Figure 1-1

1) The left side of the status information bar shows the running status of the device. The status is divided into three types: idle, running, and to be cleared. The right side shows the name of device.

2) Application button bar: Users can click the button to enter the corresponding application panel.

3) Home button: Users can jump from any application panel to the main panel.

2.1 Print Status

Click the "Print Status" button in Figure 1-1 to jump to the device print status panel. This panel enable users to view the entire status of the current print file. This panel contains print button, stop button, consumables information, and model screenshots. . The interface is showed in Figure 1-2:

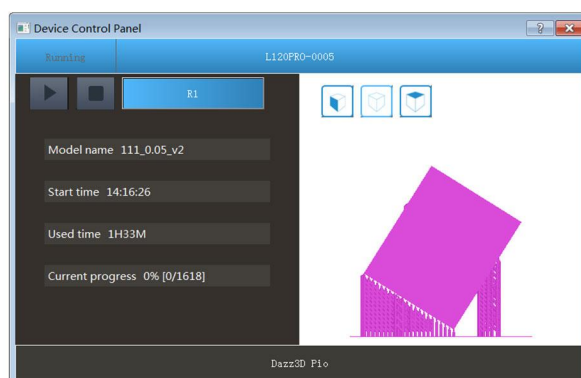


Figure 1-2

Figure 1-2 shows the status of the device during printing.

1) Resin button--Displays the type of resin used for current printing. Click this button and it will jump to the resin list panel, where users can set resin.

2) View--The right side of Figure1-2 shows how to view the contents of the printing file. There are three icons in the upper left corner. Click to switch between side view, front view and top view. The printed portion is obscured to show the progress of the print.

2.2. Model List

Click the "Model List" button in Figure 1-1 to jump to the model list panel. This panel can be used to upload, download, delete, and search the model print data files. The interface is showed in Figure 1-3:

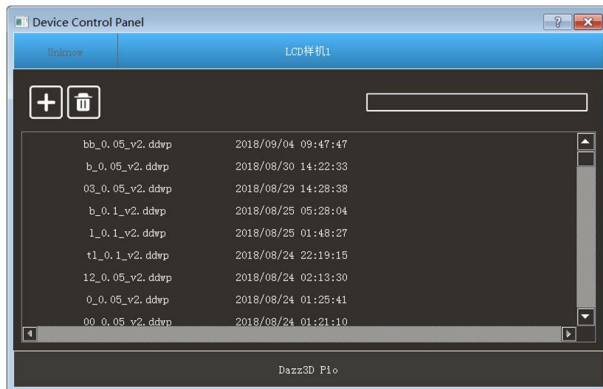


Figure 1-3

1) Upload button--Click the "+" button in the upper left corner of this panel to upload the file. The already cut print data file can be uploaded to the device side.

2) Delete button--Click the button in the upper left corner of this panel. The selected file can be deleted from the device side. When deleting, a second confirmation dialog will pop up, click OK to delete. Second confirmation is to avoid accidental deletion of files.

3) Search text box--Users enter the condition to be searched in the search text box, as long as the file name in the model list contains this condition, it will be highlighted.

4) Download - User select a file and click the right mouse button, the download menu will pop out. Users can click this menu to select the target directory to download the selected file to the computer hard disk.

5) Print--Select a file, double-click the file to jump to the print status panel, and the device starts printing.

2.3. Resin List

Click the "Resin List" button in Figure 1-1 to jump to the Resin List panel. Through this panel, you can add, download, delete, and edit resin parameters. The interface is showed in Figure 1-4:

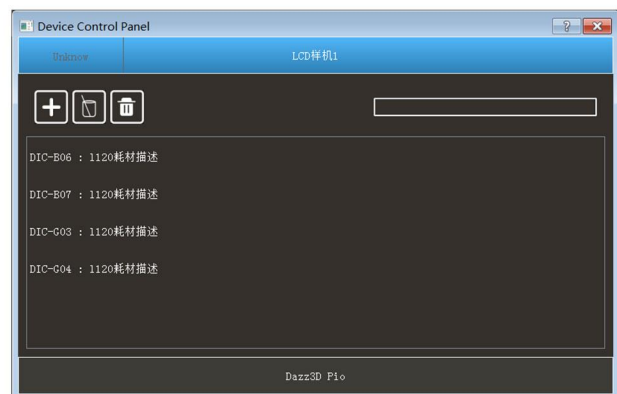


Figure 1-4

1) Add resin package--Click the "+" button in the upper left corner of this panel to add the resin. A resin data pack on your computer can be added to the device side.

2) Delete Resin--Click the button in the upper left corner of this panel. The selected resin can be removed from the device side. When deleting, a second confirmation dialog will pop up, click OK to delete. Second confirmation is to avoid accidental deletion of resin.

3) Search text box--Users enter the conditions to be searched in the search text box, as long as the condition is included in the consumable list, it will be highlighted.

4) Download - Right click on the mouse, the download menu will pop up. Users can click on this menu to select the target directory and download all the Resin to the computer's hard drive.

5) Resin parameter editing--Select the resin you want to modify, click the button in the upper left corner of this panel, the resin parameter editing interface will pop up, and the parameters of the resin can be modified.

6) Apply resin--After selecting a resin, you can apply it to the device by double-clicking the mouse. Users can check whether the current resin is successfully applied in the system information interface.

2.4. History

Click the "History" button in Figure 1-1 to jump to the historical print panel. From this panel, you can view the print record, which includes the model name, completion progress, volume, print layer thickness, resin used, and end time. The interface is showed in Figure 1-5:

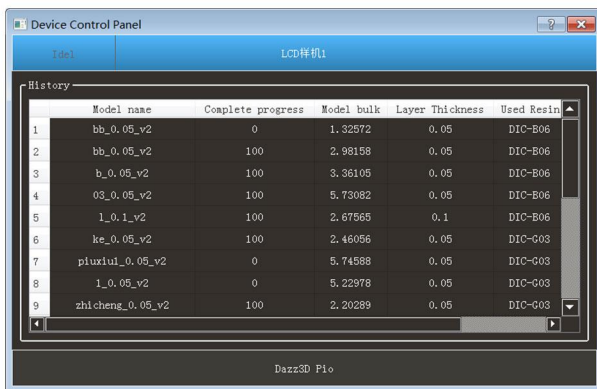


Figure 1-5

2.5. System setting

Note:When first use the device without a wireless network, users need to connect the computer and device with a network cable to set the wireless network. After setting, unplug the network cable, exit the software, then re-open the software and use the device through the set network.

Click the "System Setting" button in Figure 1-1 to jump to the system setting panel. This panel enables you to set the language, set the network, calibrate time, and view system information. The interface is showed in Figure 1-6:

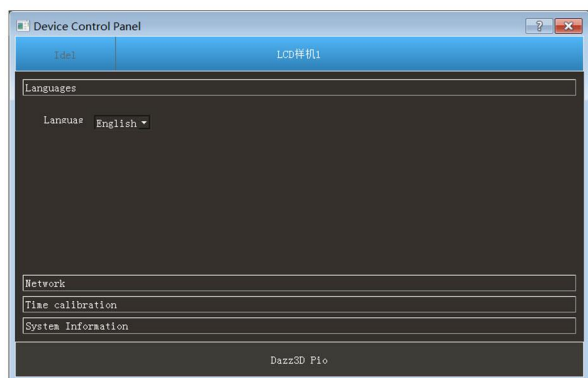


Figure 1-6

2.5.1. language setting

Currently two languages are available: Chinese and English. The software defaults to Chinese. Users can set the language through the drop-down box of the language setting. After the language is set, the software will read the cached language setting when the software restarted.

2.5.2. Network setting

Click the "Current Network" button in Figure 1-6, and the network setting interface will pop up, as showed in Figure 1-7.

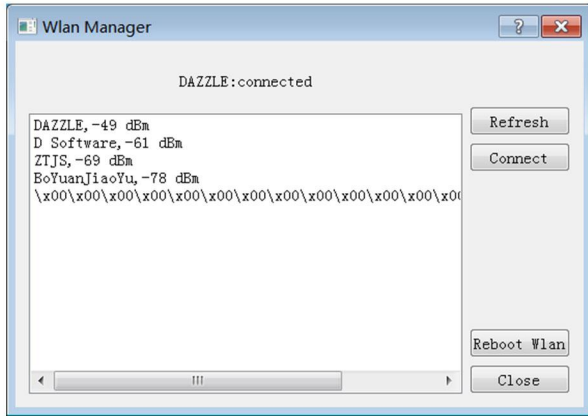


Figure 1-7

After the interface is opened, waiting for a while (2~3s), the current available wireless list is refreshed.

1) Connection Status - The top line of the interface displays the name of the currently connected wireless network and the connection status.

2) Network list--The network information listed shows like this:WIFI name,the strength of the WIFI signal. (Note: The wireless network signal is represented by a negative number. The closer to 0, the stronger the signal is).

3) Refresh - If the network list is empty or there is no wireless network to connect to, users can click the "Refresh" button on the right to refresh the network list.

4) Connect - first click on the network to select the network to be connected. Then click the "Connect" button on the right. The password input box will pop up. Enter the WIFI password, click the OK button and wait about 10s. The software will automatically refresh the connection status of the network.

Note: When the WIFI signal is poor and one connection failed,it is necessary to connect to the WIFI again and again.

5) Restart WIFI--When the current device cannot find the WIFI access point, click this button to restart the WIFI and search for the WIFI access point.

2.5.3. Time Calibration

Since the device cannot save time, the system time may be incorrect after starting the device software. In this case, you need to calibrate the system time. Users can click the "Time Calibration" button in Figure 1-6 to calibrate the current time on the device side.

2.5.4. System Information

Click the system information panel in Figure 1-6 to view the system information of current device. The system information includes: current address, device ID, IP address, device name, device status, resin, device type, device version, software version, and other information. As showed in Figure 1-8:

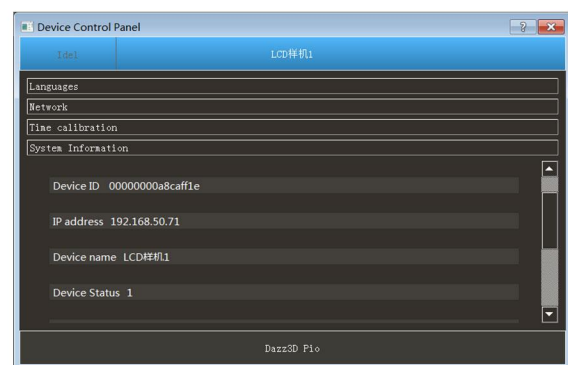


Figure 1-8

1) Modify the device name--Users double-click the line corresponding to the device name, and the text box for modifying the device name will pop up. Users could enter the new device name and clicks the OK button.

2.6. Adjust

Click the "Adjust" button in Figure 1-1 to jump to the Adjust panel. This panel enables you to adjust motors, light sources, and scrapers. The interface is showed in Figure 1-9:

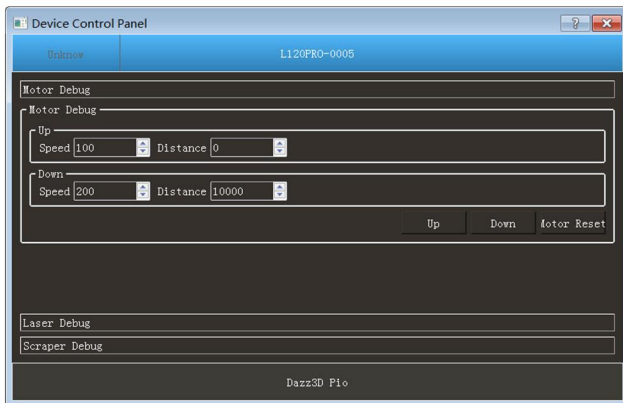


Figure 1-9

2.6.1. Motor Adjust

Click the Motor Adjust tab in Figure 1-9 to adjust the motor's rise distance, speed, descent distance, speed, and motor reset function.

2.6.2. Light Source Adjust

The light machine can be adjusted by clicking the Light Source Adjust tab in Figure 1-9. The interface is showed in Figure 1-10:

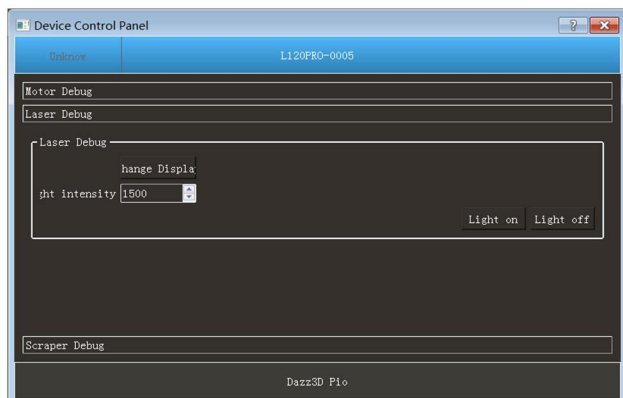


Figure 1-10

1) Light intensity - This is designed to facilitate the technician to measure the power of the light machine. Input the light intensity value, click "Open", the light machine opens according to the input value, and casts the pattern on the resin tank. Click "Close" and the light machine is turned off. Note: To prevent resin curing, do not open light machine when there is resin in the resin tank.

2) Change display content--Click this button to upload the selected picture and replace the cast pattern on the device. The image format is png and the image pixels are 1560*1440.

2.6.3. Scraper Adjust

Note: Scraper adjustment is only applied to L120 Pro devices.

The parameters that can be set are: speed, forward distance, retreat distance, platform ascending height, illumination delay, interval layer, and round trip times. The adjust parameters are showed in Figure 1-11:

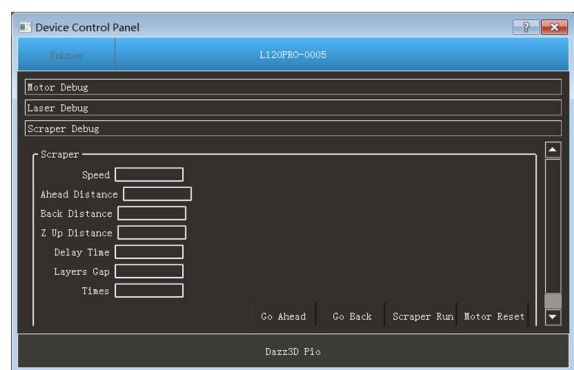


Figure 1-11

2.7. Cleaning

Click the "Cleaning" button in Figure 1-1 to jump to the Cleaning panel. One-click cleaning can be achieved through this panel. Figure 1-12 shows the interface:

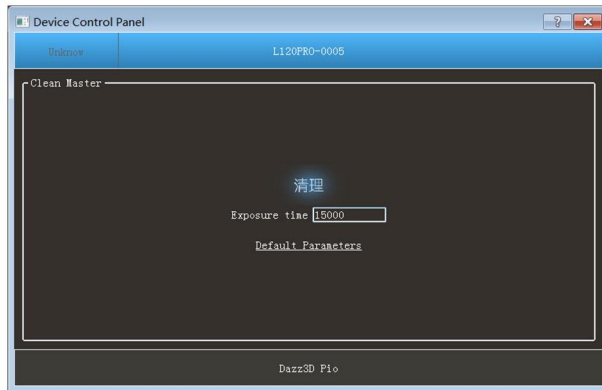


Figure 1-12

The default exposure time when cleaning is 15s. Click the "Clean" button in Figure 1-12 to complete the cleaning. This procedure is to clean the residue left in the resin tank.



NO.17 SUZHOU STREET, HAIDIAN DISTRICT, BEIJING, CHINA



support@dazz-3d.com



www.dazz-3d.com